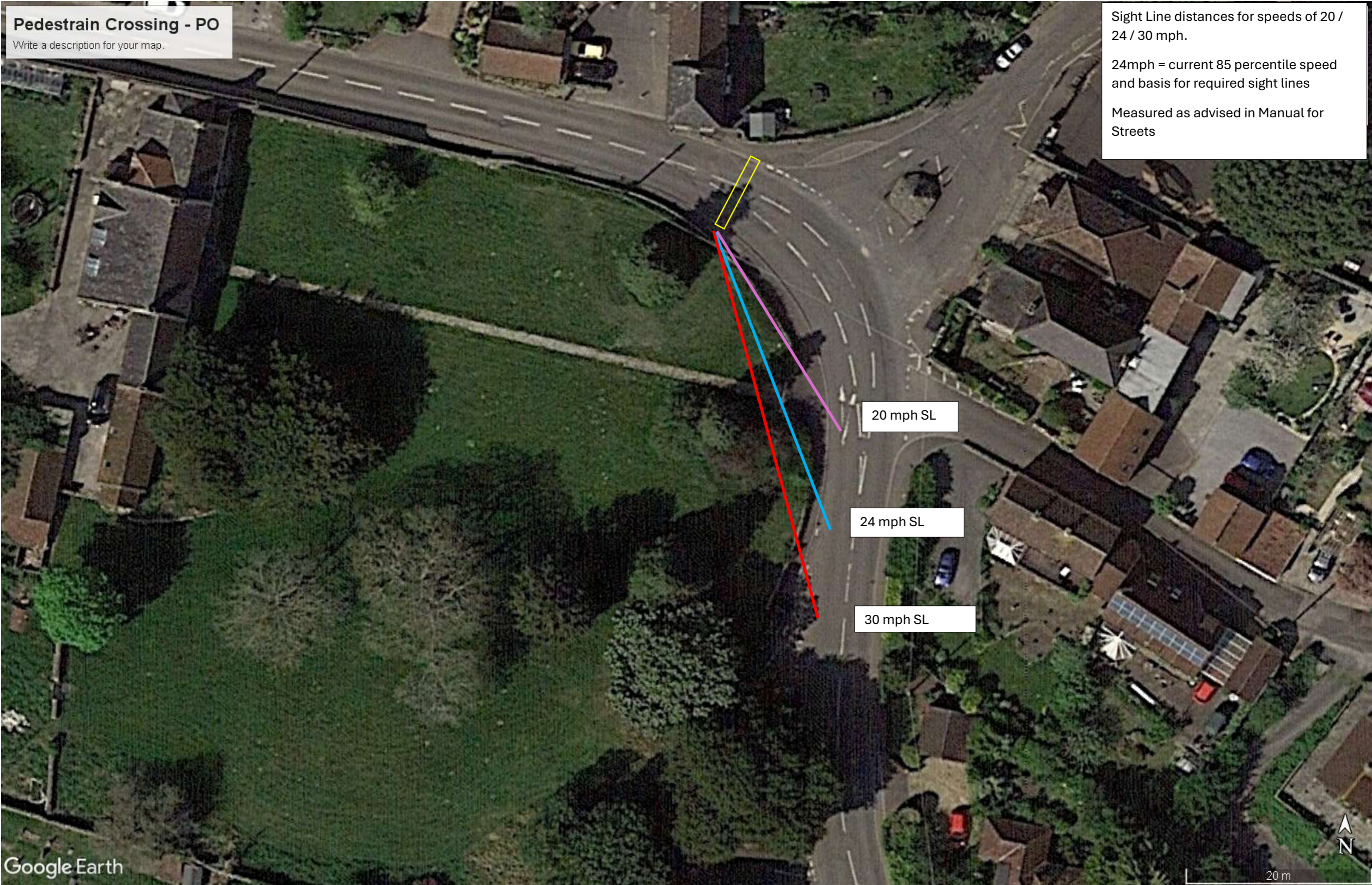
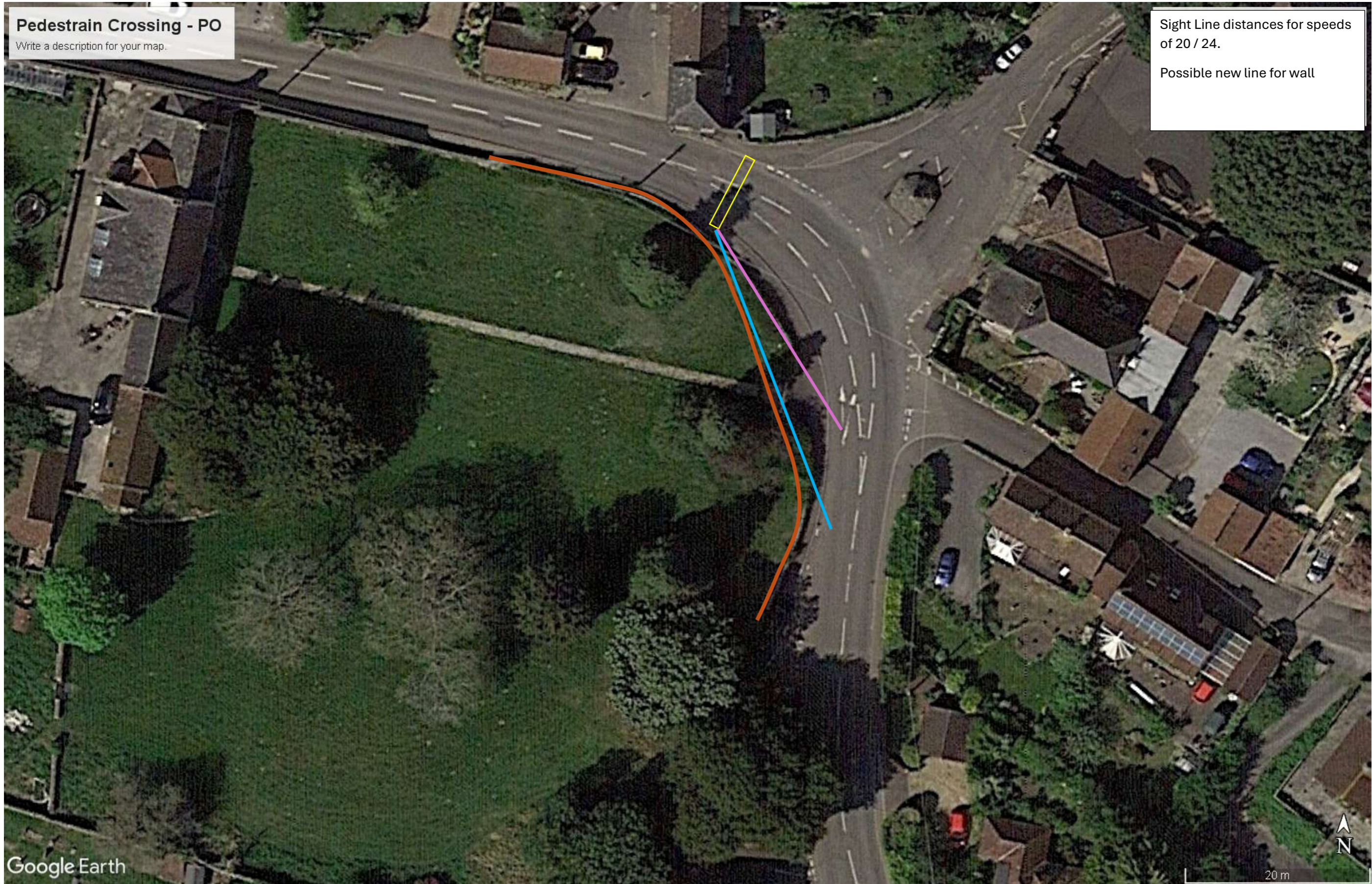


Westbury Sub Mendip – Pedestrian crossing sight lines



**Pedestrian Crossing - PO**  
Write a description for your map.

Sight Line distances for speeds  
of 20 / 24.  
  
Possible new line for wall



View from crossing point to sight line position for 20 mph



View from crossing point to sight line position for 24 mph



View from crossing point to sight line position for 30 mph

